



AutoMATE Technical Bulletin

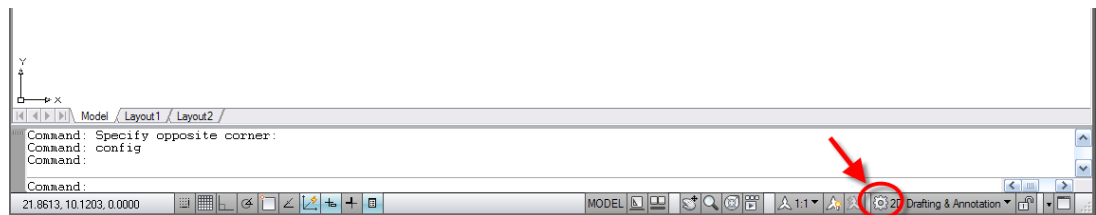
Installing AutoCAD 2010

Issue:

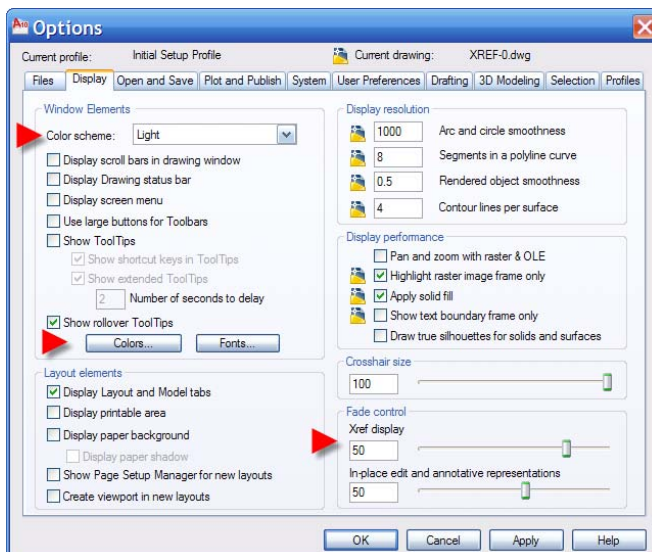
Upon installing AutoCAD 2010, many AutoMATE users will find that the 'migrate settings' feature of the AutoCAD installation program did not correctly restore all of their previous settings. And for those who did not install AutoCAD 2009, the new 'ribbon' based User Interface will cause some anxious moments. So the question for most ACAD 2010 users will be "What do I have to do to make ACAD 2010 work with AutoMATE?"

Solution:

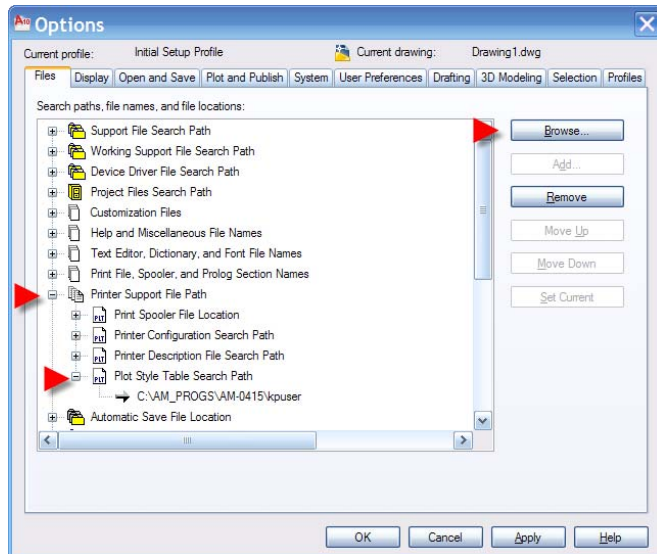
Start by loading plain AutoCAD and locate an icon on the Status Bar at the bottom of the screen that looks like a gear. This icon controls the AutoCAD workspace; the default Workspace is **2D Drafting and Annotation**. Click on the icon and a list of optional work spaces will appear. Pick **AutoCAD classic** and the dropdown menus will appear in their traditional location and the ribbon will be hidden.



You'll probably also want to check and/or change several other settings. Type **options** on the command line and press enter to bring up the AutoCAD **Options** dialog. First, pick the **Display** tab and then click on the **Colors** button. The **Uniform background** is the default element when you open this dialog. Choose Black or any other particular shade that takes your fancy. You may also want to change the background color at toolbars and other menu items. At the drop-down for **Color Scheme** select **Light**; that will change the appearance of many interface elements. When you're done, pick **Apply & Close**, then **OK** to return to the Display section.



A final change at the **Display** tab is a new setting that controls the amount that Xrefs are faded (or emphasized). In the lower right hand corner of the dialog, in the **Fade Control** section, change the setting for **Xref Display** from the default of 70 to about 50 or 55. Note that a setting of 0 results in Xrefs being displayed at normal-strength, 50 displays Xrefs at 50% strength, and +50 displays Xrefs at 150% strength.



While you're in the **Options** dialog box, you should check some other settings. AutoCAD rarely sets the **Plot Style Table Search Path** correctly, which is usually not discovered until you plot your first drawing in a new installation. First, click the **Files** tab and then the plus box for **Printer Support File Path**. Click on the plus sign for **Plot Style Table Search Path** and review the location. If incorrect, click on the **Browse** button and browse to the proper folder. Note that AutoMATE stores all standard CTB color plot style files, including **AMATE.CTB**, in the **\KPUSER** folder, simplifying the maintenance of all plot styles that you use.

Other settings to check: On the **Open & Save** tab, we recommend setting to either **2000** or **2004 Drawing** - this makes sure the DWG files you send out can be read by anyone that receives them. On the **User Preferences** tab, make sure that the **Right Click Customization** settings are correct - all set for either **Repeat Last Command** or **Enter**. On the **Selection** tab, make sure that the **Use Shift to add to selection** option is not checked.

Some other new commands in AutoCAD 2010 that you may find useful:

Introduced in AutoCAD 2006, dynamic View Transitions in the **PAN** and **ZOOM** commands are essentially step-by-step changes in the view rather than an instantaneous change. While this may be entertaining for a while, it tends to be uselessly time consuming after a while. Use the **VTENABLE** command to set the variable controlling this action to zero. **RIBBON** and **RIBBONCLOSE** can be used to turn the Ribbon On and Off. And **MENUBAR** can be used to turn the pulldown menus On and Off. If you typically use Paper Space Layouts, a new Quick View Layouts control gives you a thumbnail preview of all the defined Layouts along the bottom of the screen. This control is located on the new Status Bar - check AutoCAD's Help Files for it's usage.

Changes in shutting down AutoMATE: AutoCAD 2010 changes the functionality of the commands used to shut down AutoCAD/AutoMATE. For the current version of AutoMATE, the only menu command that will close AutoCAD and AutoMATE is the last command on the **File** pulldown - **Exit**. From the command line, however, you can type **.quit** and press enter to close AutoCAD/AutoMATE. A replacement file is available, however, that will permit the various toolbuttons on the AutoMATE menu to close AutoCAD. Those changes, however, bypass the AutoMATE shutdown options. A future menu file will offer a separate toolbutton to update the Timesheet file, create an updated slide file, etc.