



AutoMATE Technical Bulletin

Issue:

Bricscad - BCAD - is an economical alternative to AutoCAD. But since the AutoMATE Setup program does not yet include an option for linking to BCAD, the question is what do you need to do to test AutoMATE with BCAD. First, of course, is to download and install the latest version of Bricscad. Here's a link to the download: http://www.bricsys.com/en_INTL/ Then, you'll need to set up Bricscad for compatibility with AutoMATE.

Solution:

After you start Bricscad, type **CONFIG** at the command line and press **Enter**. The Bricscad **Settings** dialog shown below is displayed. There are several buttons along the top for the various methods of editing the settings. Select **Alphabetic**, the highlighted option.



This dialog is very different from the AutoCAD Options dialog, so you should review all of the settings. You should pay special attention to the following:

Cross hair size - set to 100. **File dialog** - should be checked. **Fill mode** - should be checked. **Insertion units** - set to Inches. **Lispinit** - set to Preserve from drawing to drawing. **Linear unit precision** - set to 4. **Maximum sort** - set to 500. **Save file path** - select a folder for temporary and incremental saves. **Scroll history** - set to 500. **Support File Search path** - add a path to your AutoMATE location plus BCADBMPs, e.g. C:\AMATE\BCADBMPs\.

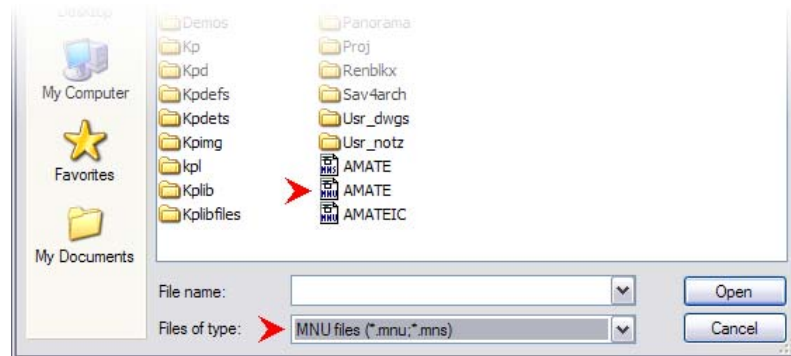
Other settings you may want to consider include: Background color, Command Line font name, Command line font size, Paper space background color, Save percent, Save time interval, and X axis color.

After you finish with the settings dialog, close Bricscad. Open Windows Explorer and browse to your AutoMATE folder and then to the BCADBMPs folder under Amate. Locate and right-click on the BCADBMPs.ZIP file and Open it with WinZip or other ZIP utility that you use. Unzip the contents of that file to the BCADBMPs folder.

Then you need to create a desktop icon linking AutoMATE to Bricscad. Create the AutoMATE-Bricscad shortcut as follows:

- Right-click on the AutoMATE desktop icon. Click on **Copy** on the pop-up menu. A copy of the AutoMATE-AutoCAD shortcut will be copied to the Windows Clipboard.
- Right-click on any empty area of your desktop and click on **Paste Shortcut** on the ensuing pop-up menu. A second copy of the AutoMATE-AutoCAD shortcut icon will be created.
- Right-click on the new AutoMATE icon and click on **Rename** on the pop-up menu. Enter any name you like, e.g. AM-BCAD, and press Enter.
- Right-click on the Bricscad desktop icon. Click on **Properties** on the pop-up menu. When the Properties dialog is displayed, press **Ctrl-C**. Nothing will appear to happen, but the **Target** path is copied to the Windows clipboard. Close the Bricscad Properties dialog.
- Right-click on the AutoMATE-Bricscad desktop icon. Click on **Properties** on the pop-up menu. When the Properties dialog is displayed, press **Ctrl-V**. This copies the path for the Bricscad program to the Target path. Close the Properties dialog.

Click on the new AutoMATE-Bricscad desktop icon to start AutoMATE. At some point, Bricscad will issue an error message that it cannot find the specified menu file. Type **Menu** at the command line and press **Enter**. The following dialog is displayed.



First, change the **Files of type** setting to **MNU files (*.mnu;*.mns)** shown at the bottom of the dialog. The file listing will then display all of the available files that match that selection. Click on the **AMATE.MNU** selection and then click **Open**. The AutoMATE menu will be compiled to the Bricscad format and you're ready to use all the power of AutoMATE with the economy of Bricscad.

If the toolbars display question marks instead of the regular AutoMATE icons, the required addition of the Support File Search path may be incorrect. Use the **Config** command and revise the path as required.