



AutoMATE Technical Bulletin

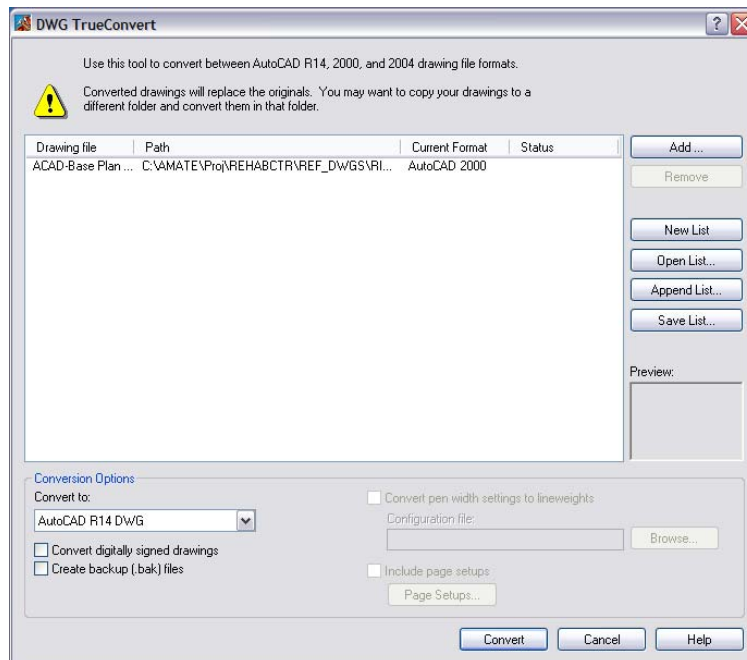
Issue:

You're really comfortable with the version of AutoCAD you're using, but you sometimes receive drawings that you can't open -- you receive either a "Drawing created by an incompatible version..." or "Invalid file" message. You call the architect and ask him to Save the drawing to a lower version so you can open it. You lose valuable time in getting the project started. Do you need to upgrade your version of AutoCAD to prevent this from happening?

Solution:

Autodesk now offers a free tool that can eliminate this problem. This program, called **DWG True Convert**, can be used to convert a DWG drawing file from any version of AutoCAD -- up to Version 2007 -- to any other version -- down to Release 14. And it can be used to convert either a single drawing or an entire folder full of drawings.

To download this program, log onto www.autodesk.com/support. From the *Select a Product* drop-down, select *AutoCAD*. From the menu at the left-hand side of the next screen select *Data and Downloads*. From the next screen select *Tools* and then select *Migration Tools* from the next menu. Select *DWG True Convert* from the next screen. Download and then run the installation program for DWG True Convert.



Unfortunately, the installation program does not create a shortcut icon on your desktop so you'll need to create one manually. Click on the **Start** button then **All Programs**. Look for *Autodesk*, then *Migration Tools*. On the *Migration Tools* flyout, right-click on *DWG True Convert* and select *Copy* on the ensuing flyout. Close the All Programs listing and then right-click anywhere on the desktop. Select *Paste shortcut* from the menu and a shortcut for DWG True Convert will be created on your desktop.